

Customer :

customer

Customer part :

customer part

Comment :

Comment

S1=0.02

S2=0.06

Tmax=337

Tp S2=376.0

PI=0.19

HI=60

Sample =16483.6

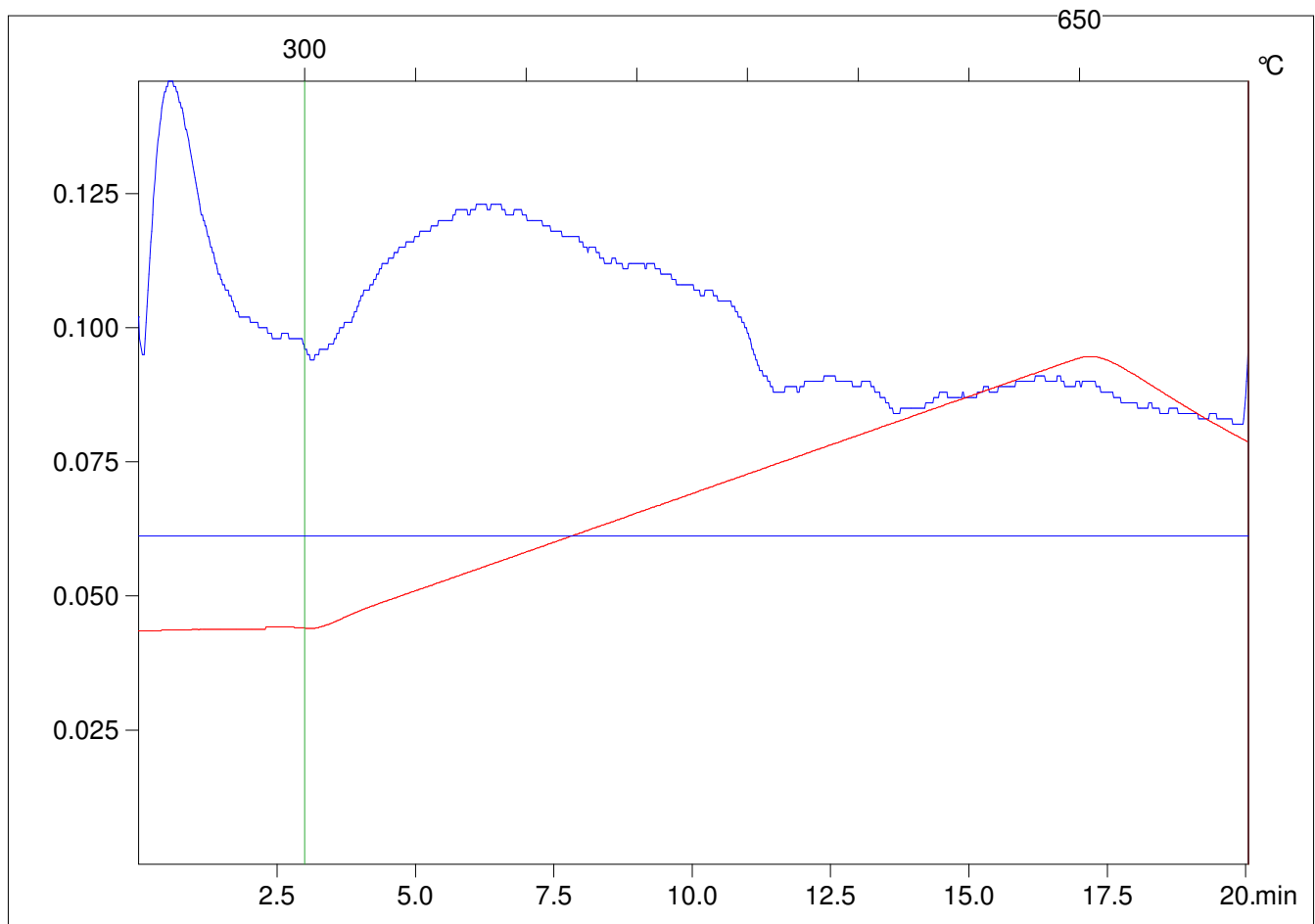
Method =Bulk Rock

Cycle=Basic

KFID(10*9)=1167

Qty =70.5

TOC=0.1



C:\VINC\PK141021\PK017.R00 : FID pyrolysis graphic

State

Pyro Status

Oxi Status